

Human EGFR/HER1 Protein



Cat. No. EGF-HM401

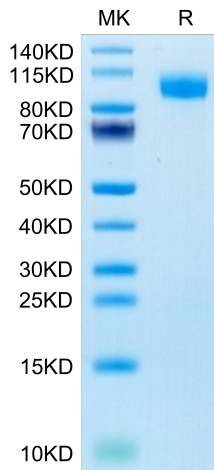
Description	
Source	Recombinant Human EGFR/HER1 Protein is expressed from HEK293 with His tag and Avi tag at the C-Terminus. It contains Leu25-Ser645.
Accession	P00533-1
Molecular Weight	The protein has a predicted MW of 71.5 kDa. Due to glycosylation, the protein migrates to 85-110 kDa based on Bis-Tris PAGE result.
Endotoxin	Less than 1 EU per µg by the LAL method.
Purity	> 95% as determined by Bis-Tris PAGE > 95% as determined by HPLC

Formulation and Storage	
Formulation	Lyophilized from 0.22µm filtered solution in PBS (pH 7.4). Normally 8% trehalose is added as protectant before lyophilization.
Reconstitution	Dissolve the lyophilized protein in distilled water. Please refer to the Certificate of Analysis for detailed instructions.
Storage	-20 to -80°C for 12 months as supplied from date of receipt. -80°C for 3 months after reconstitution. Recommend to aliquot the protein into smaller quantities for optimal storage. Please minimize freeze-thaw cycles.

Background	
The epidermal growth factor receptor is a transmembrane protein that is a receptor for members of the epidermal growth factor family of extracellular protein ligands. The epidermal growth factor receptor is a member of the ErbB family of receptors, a subfamily of four closely related receptor tyrosine kinases: EGFR, HER2/neu, Her 3 and Her 4. Receptor tyrosine kinase binding ligands of the EGF family and activating several signaling cascades to convert extracellular cues into appropriate cellular responses.	

Assay Data

Bis-Tris PAGE



Human EGFR on Bis-Tris PAGE under reduced condition. The purity is greater than 95%.

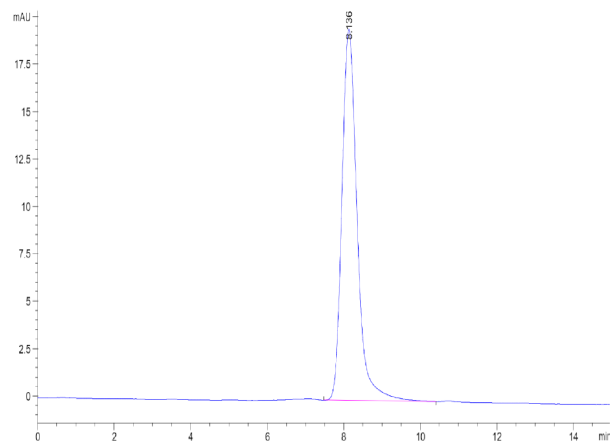
SEC-HPLC

Human EGFR/HER1 Protein

Cat. No. EGF-HM401



Assay Data



The purity of Human EGFR is greater than 95% as determined by SEC-HPLC.

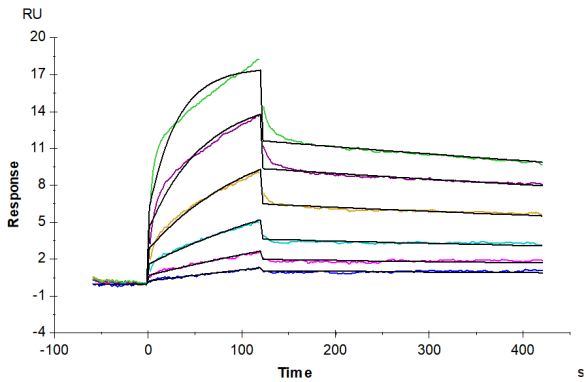
Human EGFR/HER1 Protein

Cat. No. EGF-HM401



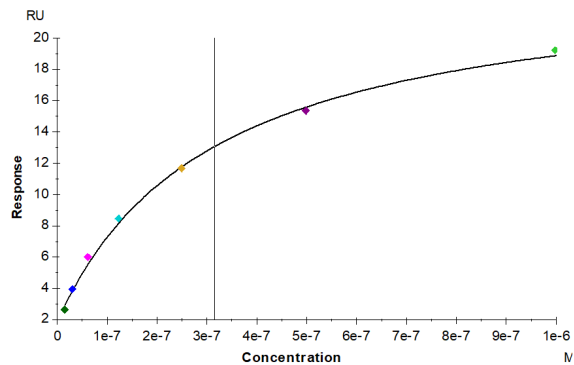
Assay Data

SPR Data



Human EGFR, His Tag captured on CM5 Chip via anti-his antibody can bind Human EGF, No Tag with an affinity constant of 1.33 nM as determined in SPR assay (Biacore T200) (QC Test).

SPR Data



Human EGFR, His Tag captured on CM5 Chip via anti-his antibody can bind Human TGF-alpha, hFc Tag with an affinity constant of 0.31 μ M as determined in SPR assay (Biacore T200).